



# FARLEIGH MEWS

---

A STUNNING SELECTION OF 2, 3 & 4 BED TOWNHOUSES AND APARTMENTS



# FARLEIGH MEWS



# FARLEIGH MEWS



Farleigh Mews, is a brand new development located within a mile from Canterbury City Centre. This stunning selection of 2 and 3 bedroom duplex apartments alongside 3 and 4 bedroom townhouses will be finished to an exacting standard and offer contemporary styled kitchen and bathroom suites. Unique features will include open plan entertaining spaces, townhouses with en-suite to master, glass balconies terraces or outdoor garden spaces and allocated parking.

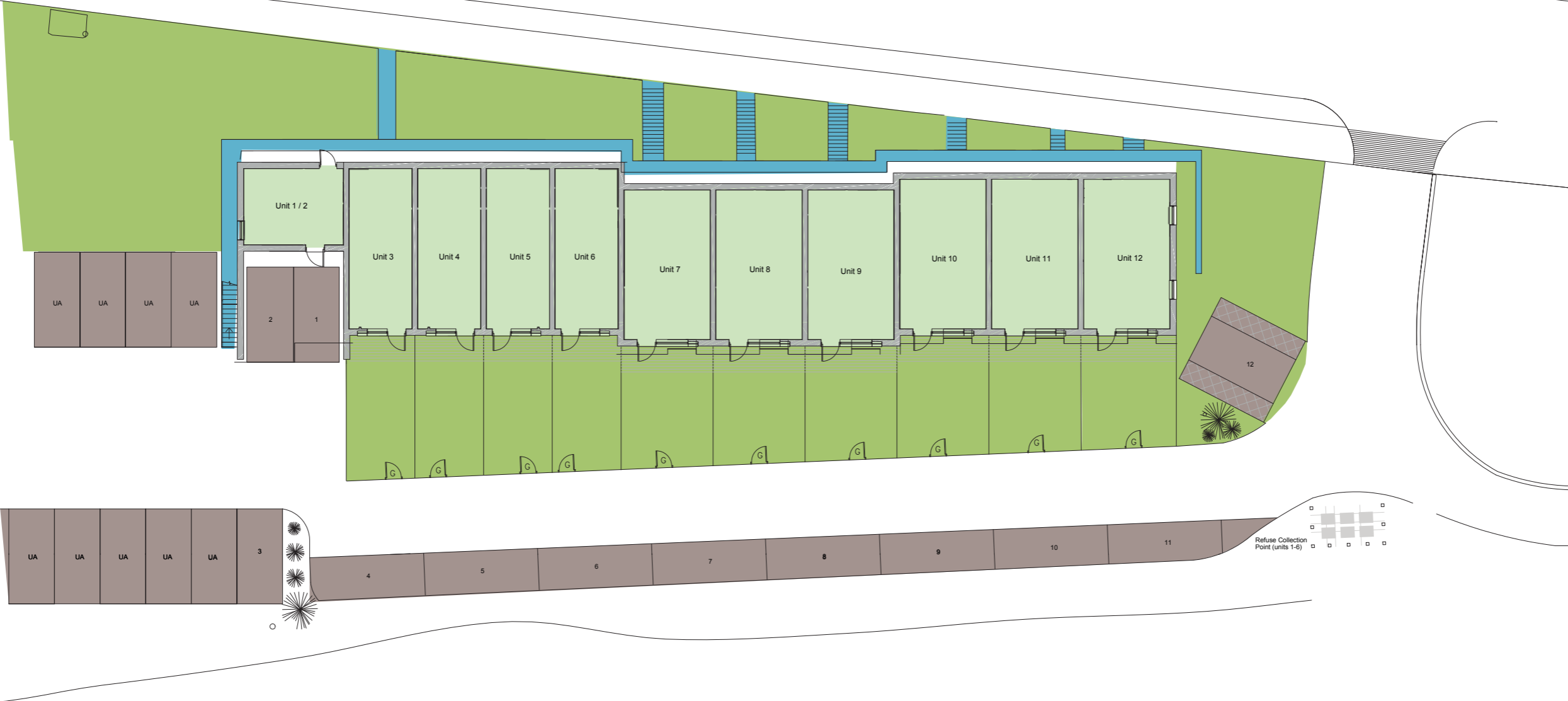
Canterbury completes the perfect city lifestyle with the Whitefriars shopping complex, plenty of award winning restaurants such as Deasons and the Abode, perfect for pre-theatre dining before an evening at the Marlowe Theatre or Curzon cinema. Within a 20 minute walk, is the Canterbury West Train Station, offering the HS1 link to London in under one hour, ideal for the city commuter or investor. In the summer, you will have the choice of many picturesque, award winning gardens to choose from and visit the many cosmopolitan festivals such as the Canterbury International Art Festival or the Canterbury Food and Drink Festival located in Dane John Gardens.



# FARLEIGH MEWS



FARLEIGH ROAD



# 1

# Two Bedroom Duplex Apartment

## GENERAL SPECIFICATION

- Grey oak effect flooring to kitchen area.
- Beige carpet to all bedrooms and living area.
- Gas fired central heating.
- White electric light switches and power sockets throughout.
- Smoke detectors.
- TV aerial and phone sockets.
- Almond White Walls

## KITCHEN

- Fully fitted, lacquered grey kitchen with chrome handles, including oak effect worktops.
- Fitted appliances including stainless steel electric single fan oven, gas hob, with stainless steel chimney extractor hood.
- Integrated fridge freezer, dishwasher and washer/dryer.
- Brushed stainless steel inset 1.5 bowl sink with mixer Monobloc tap.

## BEDROOMS

- Beige carpet throughout.
- Balcony to Bedroom Two.

## BATHROOM

- White acrylic bath with gloss white bath panel, stainless steel mixer tap and shower with chrome and clear bath glass.
- White sanitary ware to include white wash basin with stainless steel mixer tap complete with pop up waste and white WC pan.

## SECURITY AND PEACE OF MIND

- Two anthracite coloured private entrance doors with spy hole.

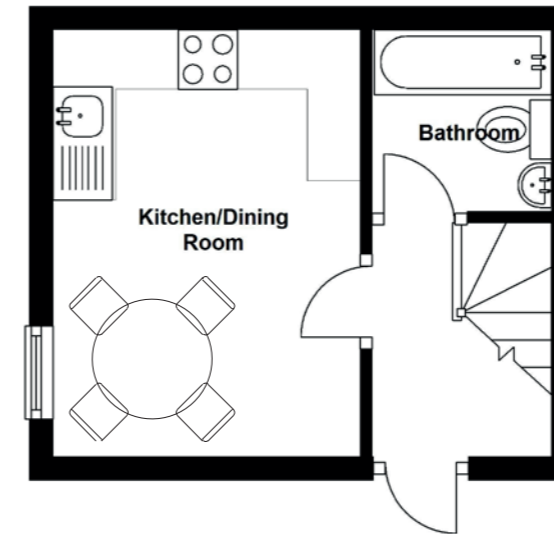
## JOINERY AND FINISHES

- Walls to be painted in almond white and ceilings to be painted in white emulsion.
- Contemporary design internal doors fitted with brushed stainless steel handles.

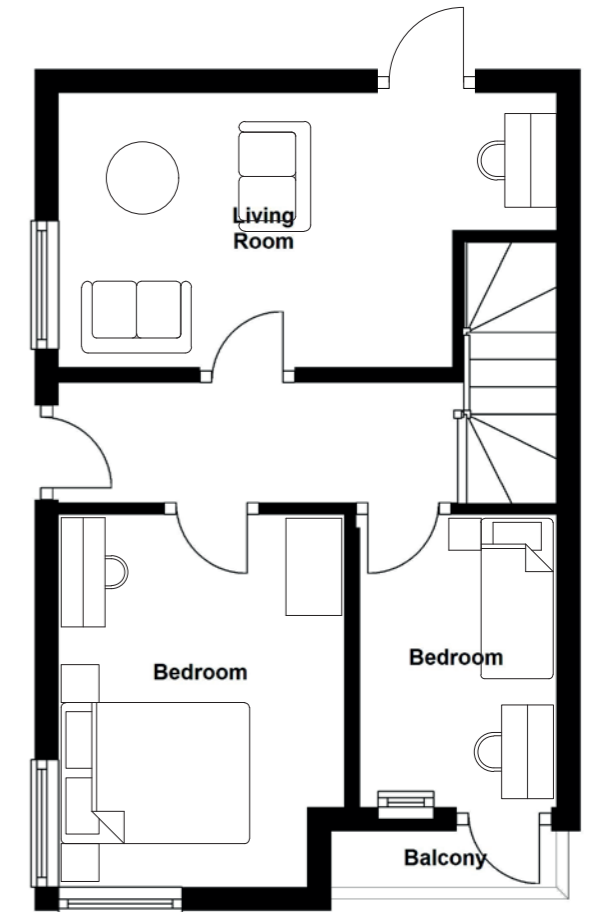
## EXTERNAL AREAS

- Contemporary anthracite coloured, double glazed windows with colonial blue weatherboard cladding.
- Allocated parking for one car.

GROUND FLOOR



FIRST FLOOR



# 2

## Three Bedroom Duplex Apartment

### GENERAL SPECIFICATION

- Grey oak effect flooring to kitchen area.
- Beige carpet to all bedrooms and living area.
- Gas fired central heating.
- White electric light switches and power sockets throughout.
- Smoke detectors.
- TV aerial and phone sockets.
- Balcony to living room area.
- Almond White Walls

### KITCHEN

- Fully fitted, lacquered grey kitchen with chrome handles, including oak effect worktops.
- Fitted appliances including stainless steel electric single fan oven, gas hob, with stainless steel chimney extractor hood.
- Integrated fridge freezer, dishwasher and washer/dryer.
- Brushed stainless steel inset 1.5 bowl sink with mixer Monobloc tap.

### BEDROOMS

- Beige carpet throughout.
- Balcony to Bedroom One.

### BATHROOM

- White acrylic bath with gloss white bath panel, stainless steel mixer tap and shower with chrome and clear bath glass.
- White sanitary ware to include white wash basin with stainless steel mixer tap complete with pop up waste and white WC pan.

### SHOWER ROOM

- Corner shower cubicle with clear glass panel.
- White sanitary ware to include white wash basin with stainless steel mixer tap complete with pop up waste and white WC pan.

### SECURITY AND PEACE OF MIND

- Private anthracite coloured entrance door with spy hole.

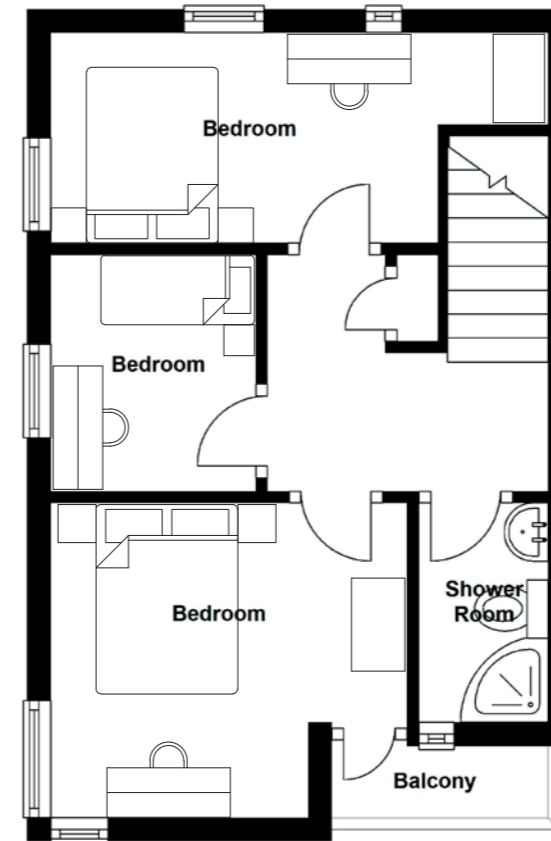
### JOINERY AND FINISHES

- Walls to be painted in almond white and ceilings to be painted in white emulsion.
- Contemporary design internal doors fitted with brushed stainless steel handles.

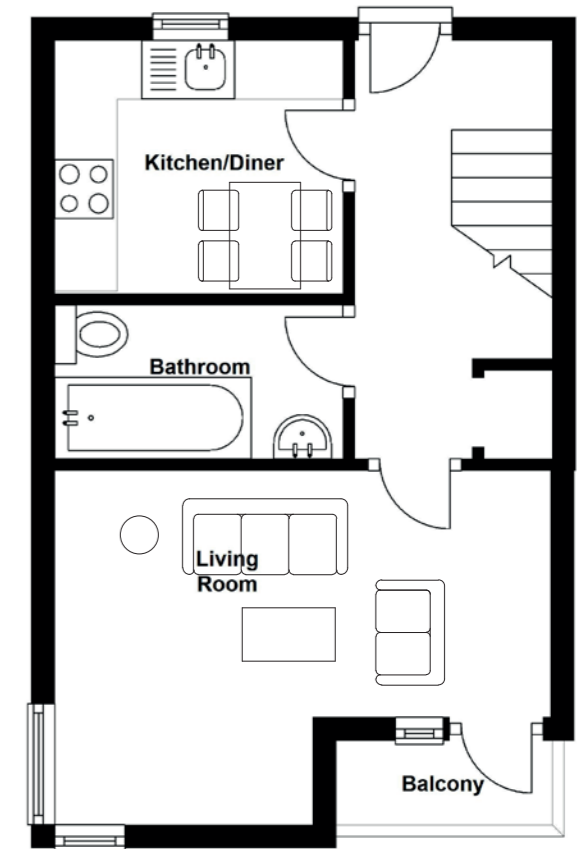
### EXTERNAL AREAS

- Contemporary anthracite coloured, double glazed windows with colonial blue weatherboard cladding.
- Allocated parking for one car.

FIRST FLOOR



SECOND FLOOR



# 3

# Three Bedroom Townhouse

## GENERAL SPECIFICATION

- Grey oak effect flooring to kitchen area.
- Beige carpet to all bedrooms and laminate flooring in living area.
- Gas fired central heating.
- White electric light switches and power sockets throughout.
- Smoke detectors.
- TV aerial and phone sockets.
- Additional dressing and study area to unit 6.
- Front window bay to units 3 & 4.
- Recessed down lighters with LED lamps to living and kitchen area.
- Laminate flooring in living area.
- Almond White Walls

## KITCHEN

- Fully fitted, lacquered grey kitchen with chrome handles, including oak effect worktops.
- Fitted appliances including stainless steel electric single fan oven, gas hob, with stainless steel chimney extractor hood.
- Integrated fridge freezer, dishwasher and washer/dryer. Brushed stainless steel inset 1.5 bowl sink with mixer Monobloc tap.

## BEDROOMS

- Beige carpet throughout.
- Bedroom with Balcony.

## BATHROOM

- White acrylic bath with gloss white bath panel, stainless steel mixer tap and shower with chrome and clear bath glass.
- White sanitary ware to include white wash basin with stainless steel mixer tap complete with pop up waste and white WC pan.

## EN-SUITE TO MASTER

- Enclosed shower cubicle with clear glass panel.
- White sanitary ware to include white wash basin with stainless steel mixer tap complete with pop up waste and white WC pan.

## SECURITY AND PEACE OF MIND

- Canopy, anthracite coloured entrance door with spy hole.

## JOINERY AND FINISHES

- Walls to be painted in almond white and ceilings to be painted in white emulsion.
- Contemporary design internal doors fitted with brushed stainless steel handles.

## EXTERNAL AREAS

- Contemporary anthracite, double glazed windows with colonial blue weatherboard cladding
- Enclosed, fenced rear garden.
- Allocated parking for one car.
- Front elevation decking area, facing Farleigh Road



# 4

# Four Bedroom Townhouse

## GENERAL SPECIFICATION

- Grey oak effect flooring to kitchen area.
- Beige carpet to all bedrooms and living area.
- Gas fired central heating.
- White electric light switches and power sockets throughout.
- Recessed down lighters with LED lamps to living and kitchen area.
- Smoke detectors.
- TV aerial and phone sockets.
- Bay window to Bedroom 4 (excluding unit 9)
- Almond White Walls

## KITCHEN

- Fully fitted, lacquered grey kitchen with chrome handles, including oak effect worktops.
- Fitted appliances including stainless steel electric single fan oven, gas hob, with stainless steel chimney extractor hood.
- Integrated fridge freezer, dishwasher and washer/dryer.
- Brushed stainless steel inset 1.5 bowl sink with mixer Monobloc tap.

## BEDROOMS

- Beige carpet throughout.

## BATHROOM

- White acrylic bath with gloss white bath panel, stainless steel mixer tap and shower with chrome and clear bath glass.
- White sanitary ware to include white wash basin with stainless steel mixer tap complete with pop up waste and white WC pan.

## EN-SUITE TO MASTER

- Enclosed shower cubicle with clear glass panel.
- White sanitary ware to include white wash basin with stainless steel mixer tap complete with pop up waste and white WC pan.

## SECURITY AND PEACE OF MIND

- Canopy, anthracite coloured entrance door with spy hole.

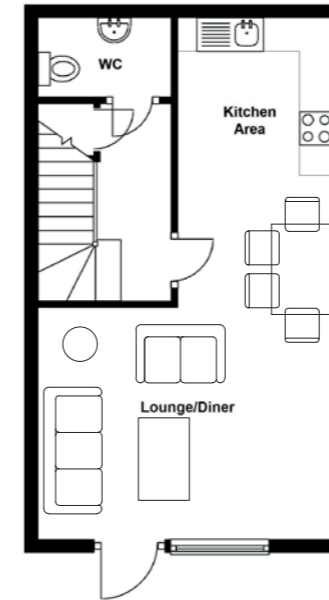
## JOINERY AND FINISHES

- Walls to be painted in almond white and ceilings to be painted in white emulsion.
- Contemporary design internal doors fitted with brushed stainless steel handles.

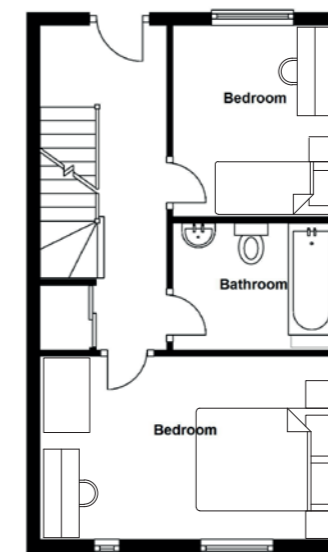
## EXTERNAL AREAS

- Contemporary anthracite, double glazed windows with colonial blue weatherboard cladding
- Enclosed, fenced rear garden.
- Allocated parking for one car.
- Front elevation decking area, facing Farleigh Road

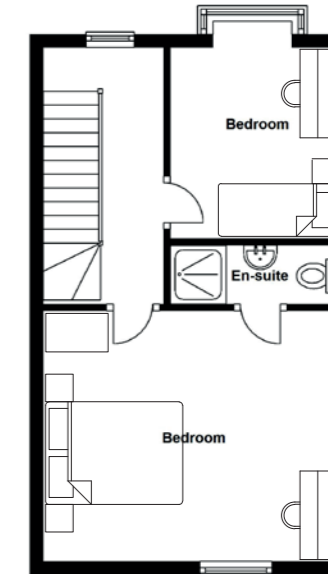
GROUND FLOOR



FIRST FLOOR

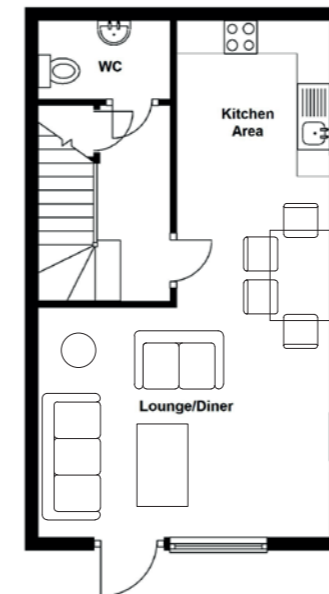


SECOND FLOOR

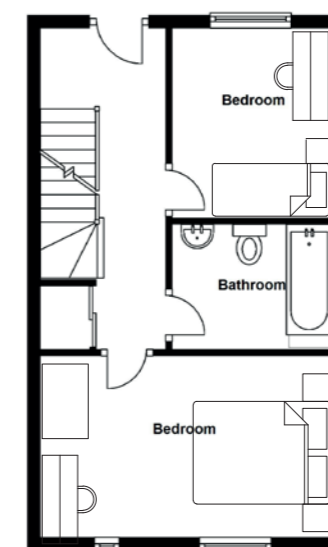


UNIT  
7, 8, 9,  
10, 11

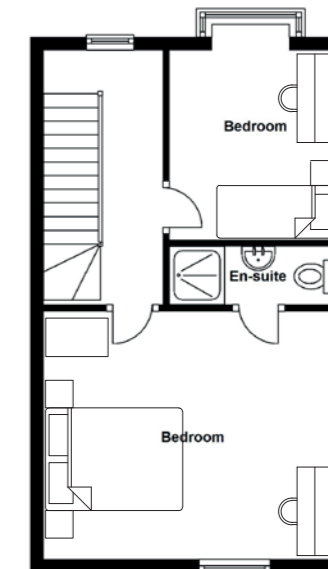
GROUND FLOOR



FIRST FLOOR



SECOND FLOOR



UNIT  
12





# THINGS TO DO



With a fabulous selection of contemporary restaurants, art venues, shopping and bars, Canterbury is perfectly placed for you to enjoy yourself or with visiting guests.

## BRUNCH

**REFECTORY KITCHEN**  
16 St Dunstan's Street, Canterbury, CT2 8AF

**WILLOWS SECRET KITCHEN**  
42 Stour Street, Canterbury, CT1 2PH

## LUNCH

**THE GOODS SHED**  
Station Rd W, Canterbury CT2 8AN

## EVENING DINING

**ABODE CANTERBURY**  
30-33 High St, Canterbury CT1 2RX

**DEESONS RESTAURANT**  
25-27 Sun Street, Canterbury CT1 2HX

**THE AMBRETTE**  
14-15 Beer Cart Lane, Canterbury, Kent CT1 2NY

**THE CORNER HOUSE**  
1 Dover Street, Canterbury CT1 3HD

## SHOP

**WHITEFRIARS**  
14 Gravel Walk, CT1 2TF

## CULTURE

**CANTERBURY INTERNATIONAL ART FESTIVAL**  
October – November

**CANTERBURY FOOD AND DRINK FESTIVAL**  
September

**CITY SOUND PROJECT**  
April – May

**WHITSTABLE OYSTER FESTIVAL**  
July

**CAMRA BEER FESTIVAL**  
July

**WISE WORDS FESTIVAL**  
April – May

## VISIT

**CANTERBURY CATHEDRAL**  
11 The Precincts, CT1 2EH

**THE BEANEY HOUSE OF CULTURE AND KNOWLEDGE**  
18 High St, Canterbury CT1 2BD

**CANTERBURY PUNTING CO**  
Water Lane, CT1 2NQ

**CANTERBURY TALES**  
Water Lane, CT1 2NQ

## ENTERTAINMENT

**MARLOWE THEATRE**  
The Friars, CT1 2AS

**CLUB CHEMISTRY**  
15 Station Road East, Canterbury CT1 2RB

**CURZON CINEMA**  
Westgate Hall Rd, Canterbury CT1 2BT

**GULBENKIAN THEATRE**  
Canterbury, Kent CT2 7NB

**ODEON CINEMA**  
St Georges Place, Canterbury CT1 1UP

## LEISURE & FITNESS

**KINGSMEAD LEISURE CENTRE**  
Active Life Ltd, Kingsmead Road, Canterbury, CT1 2PH

**DW SPORTS FITNESS**  
Maybrook Retail Park, Vauxhall Road, Canterbury, CT1 1ZG

**LIFESTYLE FITNESS**  
The Canterbury Campus, Knight Avenue, Canterbury, CT2 8QA

**KENT SPORT**  
University of Kent, Canterbury, CT2 7NL





# FARLEIGH MEWS

---

## CONTACT DETAILS

T. 01227 763888

E. [signature@regal-estates.co.uk](mailto:signature@regal-estates.co.uk)

Regal Signature, 57 Castle Street,  
Canterbury, Kent, CT1 2PY

---

ANOTHER NEW DEVELOPMENT BY

**BELGRAVIA**  
HOMES

LAND & NEW HOMES



Photos shown are for illustration purposes only and are subject to change on completion. The specification can be changed or altered without notice and is for guidance purposes only. Please check with your sales advisor to confirm the

specification for your property. Every care has been taken to ensure the accuracy of all information provided but this does not form part of or constitute, a representation, warranty or part of any contract.